



Co-funded by
the European Union

Embracing EU corporate social
responsibility: challenges and
opportunities of business-society bonds
transformation in Ukraine



101094100 — EECORE — ERASMUS-JMO-2022-HEI-
TCH-RSCH-UA-IBA
<https://eecore.snau.edu.ua/>

СЕРТИФІКАТНИЙ НАВЧАЛЬНИЙ КУРС

КОРПОРАТИВНА СОЦІАЛЬНА ВІДПОВІДАЛЬНІСТЬ/ ВІДПОВІДАЛЬНА ДІЛОВА ПОВЕДІНКА та СОЦІАЛЬНЕ ПІДПРИЄМНИЦТВО 2024



SNAU
University that
studies life

Тема. Інституційне
соціально відповідальних
університетів в
міжнародних рейтингах

лідерство
контексті

Інна ХОВРАК

<https://eecore.snau.edu.ua/komanda-proiektu/inna-hovrak/>



27.06.2023 16.30 EEST УВАГА! ВЕДЕТЬСЯ ПРЯМА ТРАНСЛЯЦІЯ ТА ЗАПИС ЗАХОДУ НА **YOUTUBE**



Co-funded by
the European Union



Sumy National
Agrarian University

Інституційне лідерство соціально відповідальних університетів в контексті міжнародних рейтингів

- 1. Взаємозв'язок соціальної відповідальності університетів та етичного лідерства**
- 2. Порівняння основних міжнародних рейтингів університетів**
- 3. The Times Higher Education Impact Rankings**
- 4. The UI GreenMetric World University Ranking**
- 5. QS Sustainability Rankings**



Co-funded by
the European Union



Sumy National
Agrarian University

1. Взаємозв'язок соціальної відповідальності університетів та етичного лідерства



Co-funded by
the European Union



Sumy National
Agrarian University



International Encyclopedia of Education (Fourth
Edition)
2023, Pages 137-145



The ethical imperative in educational leadership

Christopher M. Branson

Show more

+ Add to Mendeley Share Cite

<https://doi.org/10.1016/B978-0-12-818690-5.06023-5>

Get rights and content



Nurse Education Today
Volume 30, Issue 3, April 2010, Pages 224-227



Educating for ethical leadership

Anin Gallagher, Verena Tschudin

Show more

+ Add to Mendeley Share Cite

<https://doi.org/10.1016/j.nedt.2009.11.003>

Get rights and content



Sustainable Production and Consumption
Volume 22, April 2020, Pages 195-204



Research article

Ethical leadership in sustainable organizations: The moderating role of general self-efficacy and the mediating role of organizational trust

Selrish Ilyas, Ghulam Abid, Fouzia Ashfaq

Show more

+ Add to Mendeley Share Cite

<https://doi.org/10.1016/j.spc.2020.03.001>

Get rights and content



Procedia - Social and Behavioral Sciences
Volume 230, 12 September 2016, Pages 463-470



The Role of Ethical Leadership on Employee Performance in Guilan University of Medical Sciences

Hamid Reza Rezaei Kelidbari, Melidi Fadaei, Pejman Ebrahimi

Show more

+ Add to Mendeley Share Cite

<https://doi.org/10.1016/j.procs.2016.09.058>

Get rights and content

Project TEMPUS - Освіта для лідерства, інтелектуальності та розвитку таланту - Інститут вищої освіти НАПН України

С. Калашнікова

Розвиток лідерського потенціалу сучасного університету: основи та інструменти



Co-funded by
the European Union



Sumy National
Agrarian University

Параметри еволюційних рівнів управління

Параметри	Адміністрування	Менеджмент	Лідерство
Визначальний чинник	Матеріальні ресурси	Матеріальні та інформаційні ресурси	Людські ресурси (люди)
Ключове завдання	Управління кадрами	Менеджмент людських ресурсів	Розвиток людського потенціалу
Співробітники	Підлегли	Підлегли	Послідовники
Група	Трудовий колектив	Колектив	Команда
Прийняття рішень	Індивідуальне	Індивідуальне та колегіальне	Колегіальне
Інструменти впливу	Адміністративний тиск	Матеріальні стимули	Внутрішні мотиви, власний приклад
Ключові дієслова	Контролювати, розподіляти	Делегувати, оцінювати	Допомагати, розвивати
Відповідальність	Адміністративна	Фінансова	Соціальна

Еволюція та домінування моделей управління:

1880–1940 – адміністрування (влада)

1940–1990 – менеджмент (влада – процеси)

1990 – т.ч. – врядування-лідерство (відповідальність – відносини)

Source:

<http://surl.i/hiubl>



Co-funded by
the European Union



Sumy National
Agrarian University

Залежність між еволюційними рівнями управління та базовими якостями особистості управлінця



Source:

<http://surl.li/hiubl>



Co-funded by
the European Union



Sumy National
Agrarian University

Види лідерства

Відповідно до основних видів діяльності (індивідуальна та групова), виокремлюють два види лідерства – індивідуальне та організаційне.

Поняття	Індивідуальне лідерство – суб'єктом прояву лідерства виступає окрема особистість. Прояв може здійснюватися як безпосередньо стосовно себе (саморозвиток особистості), так і відносно інших особистостей.
Поняття	Інституційне (або організаційне) лідерство – суб'єктом прояву лідерства виступає організація. Прояв може здійснюватися як безпосередньо стосовно себе (саморозвиток організації), так і стосовно інших організацій.
Важливо	Індивідуальне лідерство є первинним відносно інституційного / організаційного.

Типи лідерства

Відповідно до основних видів суспільної діяльності та соціального управління констатуються типи лідерства, серед яких: політичне, державне, підприємницьке (бізнес), громадське, освітнє тощо.

Поняття	<p>Освітнє лідерство слід розглядати у таких трьох взаємопов'язаних аспектах:</p> <ul style="list-style-type: none"> ■ лідерство в освіті (діяльність керівників, викладачів, студентів / учнів та, як результат, освітніх закладів-лідерів); ■ лідерство для освіти (діяльність науковців, громадських активістів, батьків та інших стейкхолдерів задля розвитку освіти); ■ лідерство освіти (діяльність держави (державна політика) щодо забезпечення пріоритетного розвитку освітньої сфери).
----------------	--

Source:

<http://surl.li/hiubl>

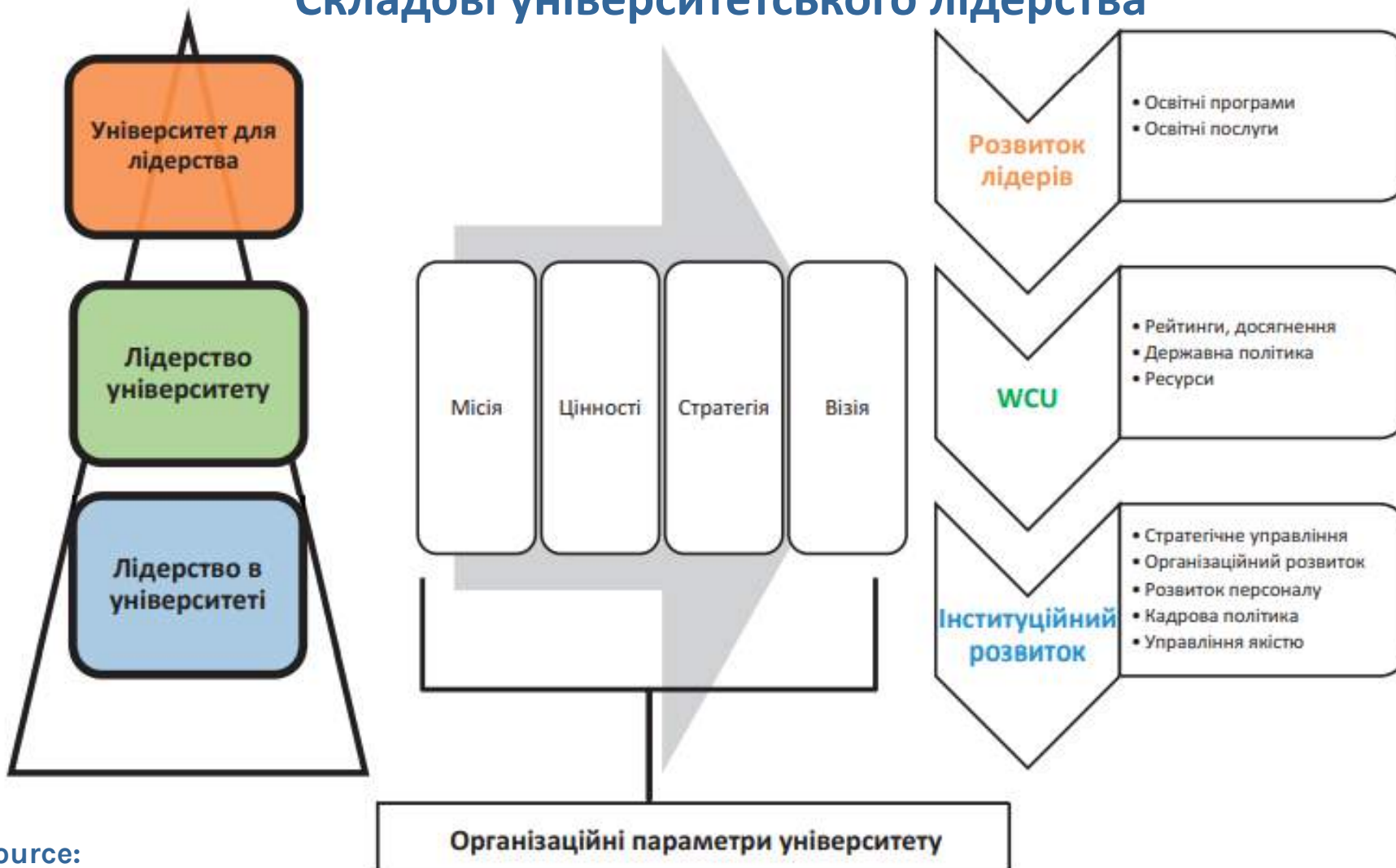


Co-funded by
the European Union



Sumy National
Agrarian University

Складові університетського лідерства



У межах реалізації Проекту Програми TEMPUS «Освіта для лідерства, інтелігентності та розвитку таланту» експертами було сформульовано визначення поняття «університетське лідерство» та ідентифіковано його складові.

ELITE – Education for Leadership, Intelligence and Talent Encouraging. –
URL: <http://elite-project.eu>



Co-funded by
the European Union



Sumy National
Agrarian University

До основних механізмів інституційного розвитку університетів,

які забезпечують імплементацію взаємозв'язку між університетською автономією-відповідальністю, врядуванням і лідерством у вищій освіті, слід віднести:

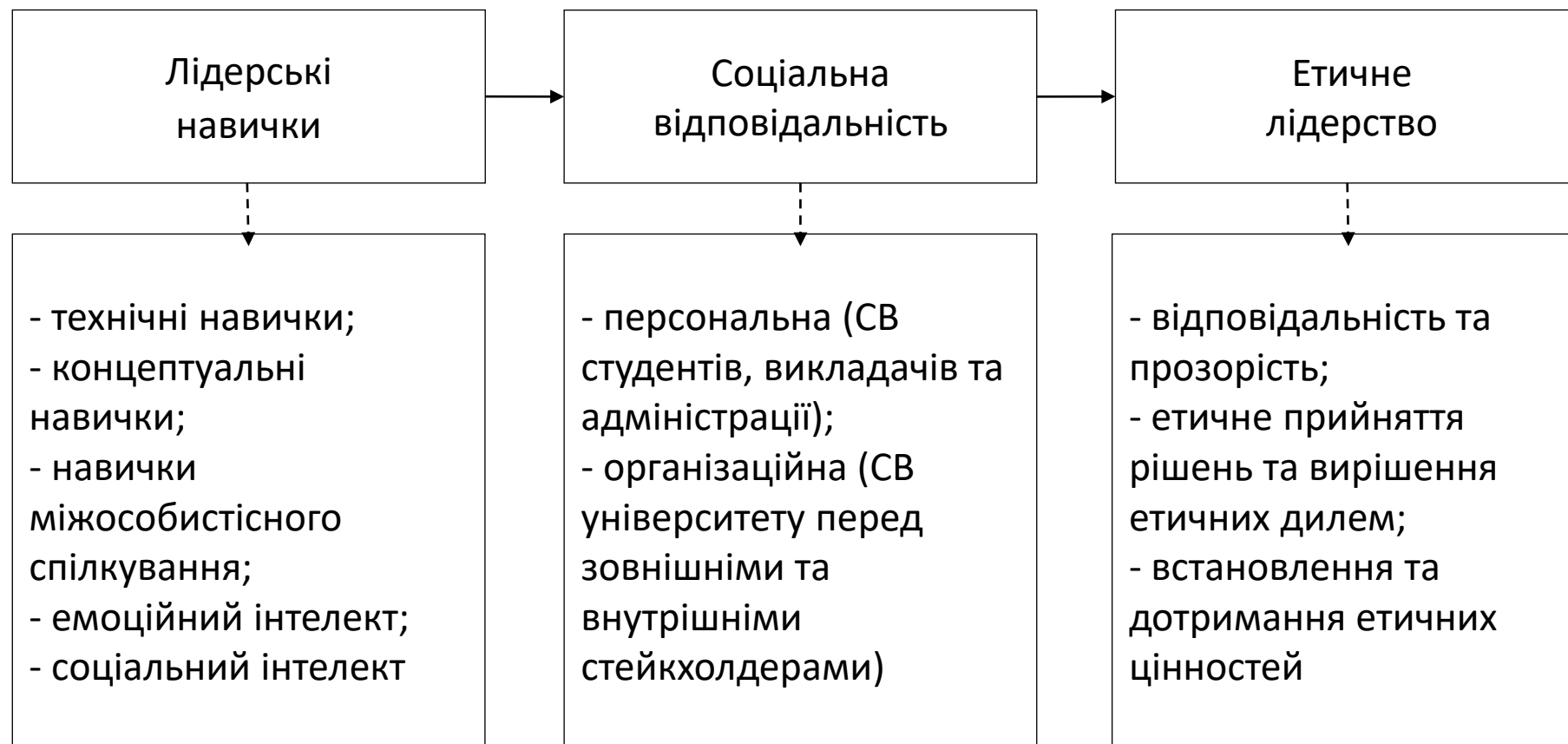
- ❖ організаційний дизайн і розвиток;
- ❖ стратегічне управління;
- ❖ розвиток внутрішніх і зовнішніх політики і програм;
- ❖ інституційна діагностика та аудит;
- ❖ розвиток персоналу;
- ❖ розвиток внутрішніх систем забезпечення якості вищої освіти;
- ❖ розвиток командного лідерства;
- ❖ управління змінами тощо.

Source:

<http://surl.li/hiubl>



Взаємозв'язок соціальної відповідальності університетів та етичного лідерства



Source:

<http://surl.li/hhytm>



Co-funded by
the European Union



Sumy National
Agrarian University

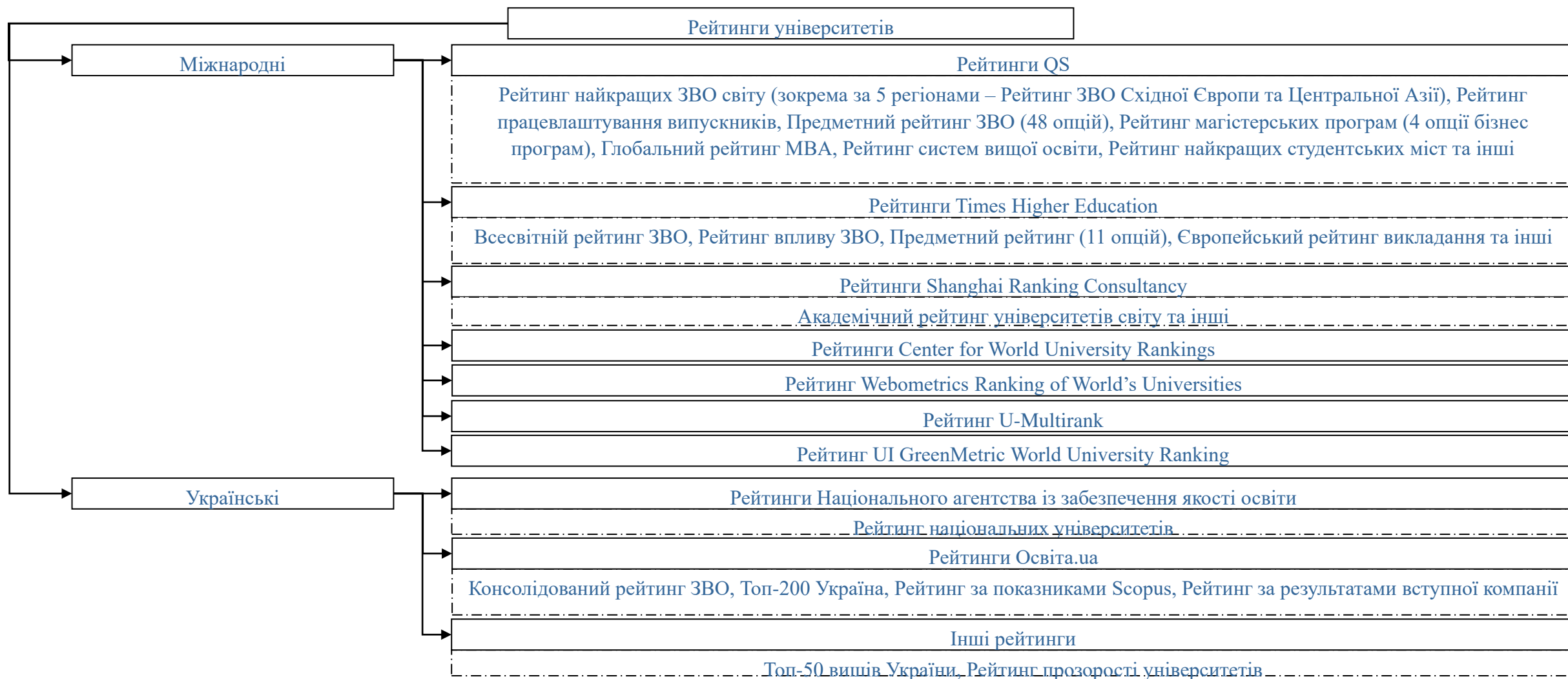
2. Порівняння основних міжнародних рейтингів університетів



Co-funded by
the European Union



Sumy National
Agrarian University





Co-funded by
the European Union



Sumy National
Agrarian University

QS World University Rankings

Особливості

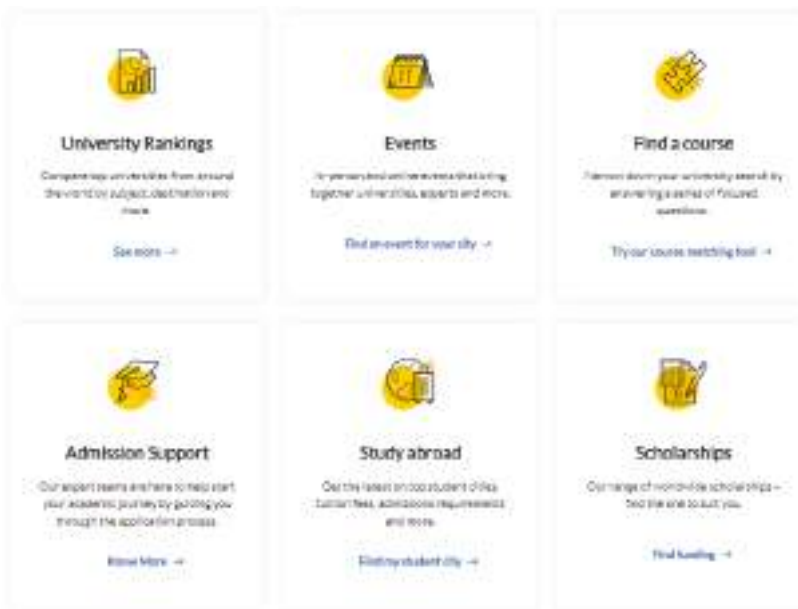
- репутація та привабливість для іноземних викладачів / студентів

Відповідність пріоритетам університету

- розвиток дуальної освіти, міжнародної співпраці

Основні дії для досягнення

- укладення та дотримання договорів про практику, стажування студентів / викладачів
- участь у міжнародних проектах



Source:

<https://www.topuniversities.com/>



Co-funded by
the European Union



Sumy National
Agrarian University

QS Best Student Cities in the World for Studying Abroad

To be considered for inclusion, each city must have a population of over **250,000**, and be home to **at least two universities** featured in the most recent QS World University Rankings®. For population metrics, the metropolitan area is used where possible. Current calculations suggest that **164** cities qualify for consideration.

Indicators:

University rankings

- How many universities does the city have which are in the QS World University Rankings?
- How well do those universities perform in the latest rankings?

Student mix

- What proportion of the city's population are students?
- How many international students are enrolled in the city?
- How inclusive is the city and the country it's located in?

Desirability

- How safe is the city?
- What are the pollution levels like in the city?
- How many respondents to our student survey wanted to study in the city?

Employer activity

- What is youth employment like in the city?
- What do employers think of the graduates produced by universities in the city?

Affordability

- How much does tuition cost at the city's universities?
- What is the cost of living for students in the city?

Student voice

- What ratings did students give the city's friendliness, sustainability, diversity and more?
- What proportion of students continue to live in the city after graduation?

Source:

<https://www.topuniversities.com/best-student-cities/>



Co-funded by
the European Union



Sumy National
Agrarian University

QS Best Student Cities in the World for Studying Abroad 2023

Rank	City	Overall Score
1	London, United Kingdom	100
=2	Munich, Germany	95.1
=2	Seoul, South Korea	95.1
4	Zurich, Switzerland	95
5	Melbourne, Australia	93.3
6	Berlin, Germany	93.2
7	Tokyo, Japan	92.9
8	Paris, France	92.4
9	Sydney, Australia	91.6
10	Edinburgh, United Kingdom	90.6

Rank	City	Overall Score
39	Prague, Czech Republic	75
58	Warsaw, Poland	67.2
62	Brno, Czech Republic	64.7
66	Budapest, Hungary	61.9
91	Krakow, Poland	51.4
117	Wroclaw, Poland	41
122	Cluj-Napoca, Romania	38
131	Timisoara, Romania	35.5
132	Bucharest, Romania	35.2
137	Iasi, Romania	33

Source:

<https://www.topuniversities.com/best-student-cities/>

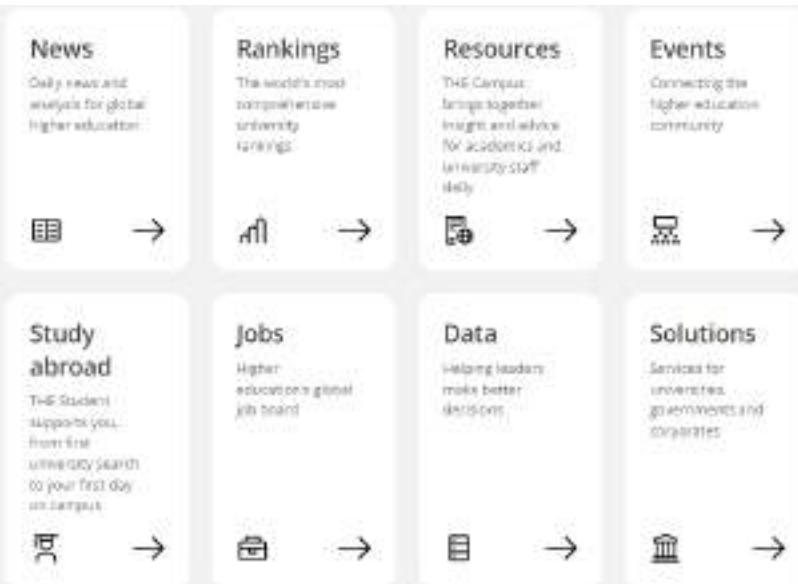


Co-funded by
the European Union



Sumy National
Agrarian University

Times Higher Education



Особливості

- репутація та привабливість для іноземних викладачів / студентів
- вплив на суспільство

Відповідність пріоритетам університету

- розвиток дуальної освіти, міжнародної співпраці
- міжсекторна співпраця

Основні дії для досягнення

- укладення та дотримання договорів про практику, стажування студентів / викладачів
- участь у міжнародних проектах
- участь у соціальних ініціативах
- наукові дослідження з тематики сталого розвитку

Source:

<https://www.timeshighereducation.com/>

© Inna Khovrak, 2024



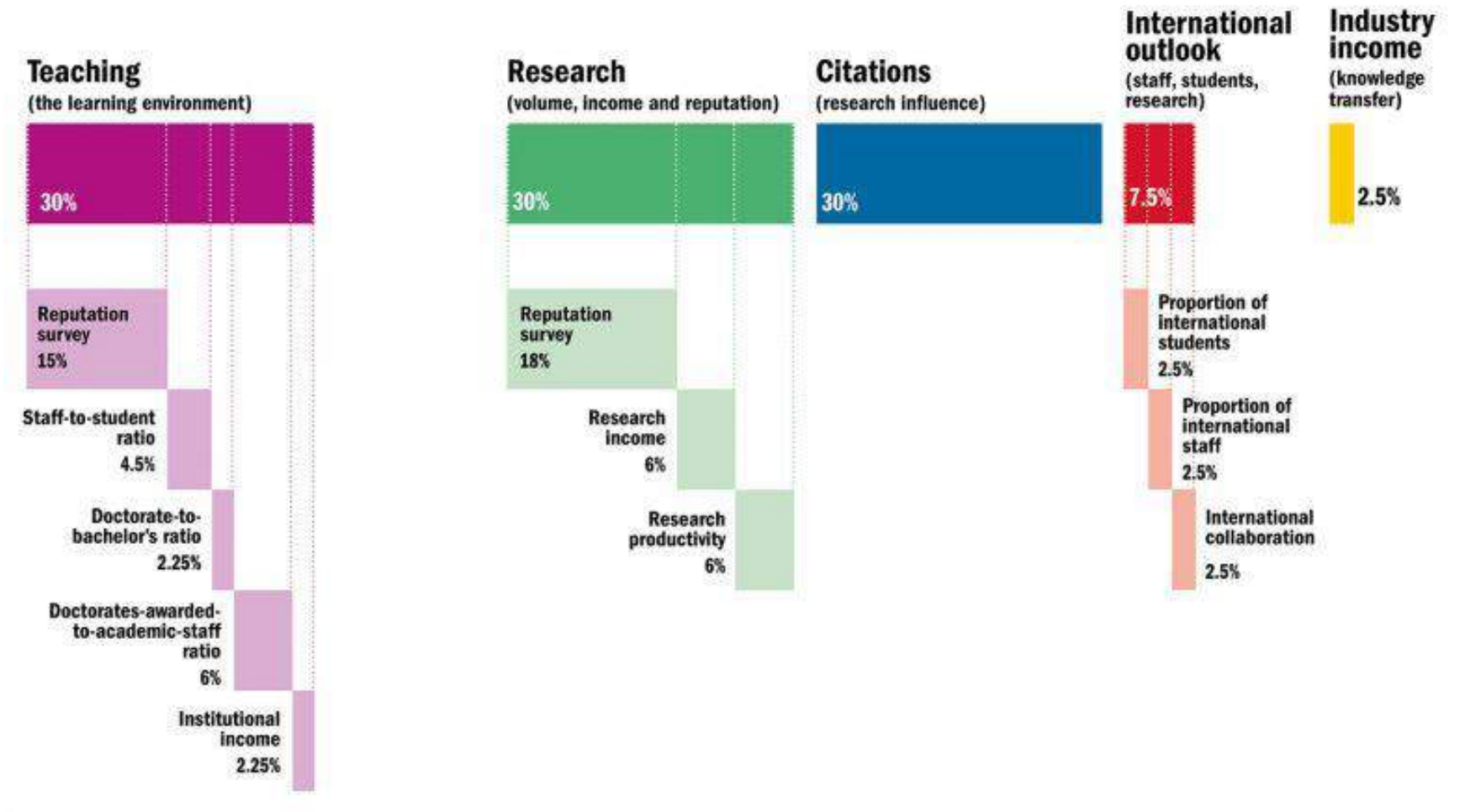
Co-funded by the European Union



Sumy National Agrarian University

Times Higher Education World University Rankings 2023

include 1,799 universities across 104 countries and regions



Source:

<https://www.timeshighereducation.com/world-university-rankings>



Co-funded by
the European Union



Sumy National
Agrarian University

Times Higher Education World University Rankings 2023

Rank	University, Country	Overall Score
1	University of Oxford, UK	96.4
2	Harvard University, US	95.2
=3	University of Cambridge, UK	94.8
=3	Stanford University, US	94.8
5	Massachusetts Institute of Technology, US	94.2
6	California Institute of Technology, US	94.1
7	Princeton University, US	92.4
8	University of California, Berkeley, US	92.1
9	Yale University	91.4
10	Imperial College London	90.4

Rank	University, Country (Poland)	Overall Score
351–400	Wroclaw Medical University	45.0-46.9
601–800	Jagiellonian University	34.0-39.2
601–800	Medical University of Lodz	34.0-39.2
801–1000	Medical University of Gdańsk	29.8-33.9
801–1000	University of Warsaw	29.8-33.9
1001–1200	Adam Mickiewicz University, Poznań	24.4-29.7
1001–1200	Medical University of Białystok	24.4-29.7
1001–1200	SWPS University of Social Sciences and Humanities	24.4-29.7
1201–1500	AGH University of Science and Technology	18.4-24.3
1201–1500	University of Gdańsk	18.4-24.3

Source:

<https://www.timeshighereducation.com/world-university-rankings>



Co-funded by
the European Union



Sumy National
Agrarian University

Times Higher Education World University Rankings 2023

Rank	University, Country (Ukraine)	Overall Score
401-500	Sumy State University	42.1-44.9
601-800	Lviv Polytechnic National University	34.0-39.2
1001–1200	Kharkiv National University of Radio Electronics	24.4-29.7
1201–1500	Ivan Franko National University of Lviv	18.4-24.3
1201–1500	National Technical University Kharkiv Polytechnic Institute	18.4-24.3
1201–1500	National Technical University of Ukraine – Igor Sikorsky Kyiv Polytechnic Institute	18.4-24.3
1201–1500	Oles Honchar Dnipro National University	18.4-24.3
1201–1500	Taras Shevchenko National University of Kyiv	18.4-24.3
1201–1500	V.N. Karazin Kharkiv National University	18.4-24.3
1201–1500	Yuriy Fedkovych Chernivtsi National University	18.4-24.3

Source:

<https://www.timeshighereducation.com/world-university-rankings>

© Inna Khovrak, 2024



Co-funded by
the European Union



Sumy National
Agrarian University

Shanghai Ranking



Academic Ranking of
World Universities



Global Ranking of
Academic Subjects

Особливості

- оцінка науково-дослідницького потенціалу

Відповідність пріоритетам університету

- науково-дослідницьке лідерство

Основні дії для досягнення

- сучасні лабораторії
- диверсифікація джерел фінансування
- комерціалізація інновацій

Source:

<https://www.shanghairanking.com/rankings/arwu/2022>



Co-funded by
the European Union



Sumy National
Agrarian University

2022 Academic Ranking of World Universities

Criteria	Indicator	Code	Weight
Quality of Education	Alumni of an institution winning Nobel Prizes and Fields Medals	Alumni	10%
Quality of Faculty	Staff of an institution winning Nobel Prizes and Fields Medals	Award	20%
	Highly Cited Researchers	HiCi	20%
Research Output	Papers published in Nature and Science*	N&S	20%
	Papers indexed in Science Citation Index-Expanded and Social Science Citation Index	PUB	20%
Per Capita Performance	Per capita academic performance of an institution	PCP	10%

*For institutions specialized in humanities and social sciences such as London School of Economics, N&S is not considered, and the weight of N&S is relocated to other indicators.

ARWU considers every university that has any Nobel Laureates, Fields Medalists, Highly Cited Researchers, or papers published in Nature or Science. In addition, universities with a significant amount of papers indexed by Science Citation Index-Expanded (SCIE) and Social Science Citation Index (SSCI) are also included. In total, more than 2500 universities are actually ranked, and the best 1000 are published.

Source:

<https://www.shanghairanking.com/rankings/arwu/2022>



Co-funded by
the European Union



Sumy National
Agrarian University

2022 Academic Ranking of World Universities

Rank	University, Country	Overall Score
1	Harvard University	100.0
2	Stanford University	76.8
3	Massachusetts Institute of Technology (MIT)	70.1
4	University of Cambridge, UK	69.6
5	University of California, Berkeley	65.3
6	Princeton University	60.0
7	University of Oxford, UK	58.7
8	Columbia University	57.2
9	California Institute of Technology	56.1
10	University of Chicago	55.1

Rank	University, Country (Poland)	National Rank
401-500	Jagiellonian University	1-2
401-500	University of Warsaw	1-2
601-700	AGH University of Science and Technology	3
801-900	Gdansk University of Technology	4-6
801-900	Warsaw University of Life Sciences	4-6
801-900	Wroclaw Medical University	4-6
901-1000	Adam Mickiewicz University	7-11
901-1000	Medical University of Warsaw	7-11
901-1000	Nicolaus Copernicus University	7-11
901-1000	Warsaw University of Technology	7-11

Source:

<https://www.shanghairanking.com/rankings/arwu/2022>



Co-funded by
the European Union



Sumy National
Agrarian University

Center for World University Rankings

The Center for World University Rankings (CWUR) is a leading consulting organization providing policy advice, strategic insights, and consulting services to governments and universities to improve educational and research outcomes.

Особливості

- конкуренто-спроможність випускників

Відповідність пріоритетам університету

- розвиток науки, сприяння підприємництву

Основні дії для досягнення

- створення акселераторів для стартапів
- програми розвитку викладачів
- інтеграція науки і освіти

Source:

<https://cwur.org/>



Co-funded by
the European Union



Sumy National
Agrarian University

Center for World University Rankings

CWUR uses seven objective and robust indicators grouped into four areas to rank the world's universities:

- 1) **Education:** based on the academic success of a university's alumni, and measured by the number of a university's alumni who have won prestigious academic distinctions relative to the university's size (25%)
- 2) **Employability:** based on the professional success of a university's alumni, and measured by the number of a university's alumni who have held top positions at major companies relative to the university's size (25%)
- 3) **Faculty:** measured by the number of faculty members who have won prestigious academic distinctions (10%)
- 4) **Research:**
 - i) Research Output: measured by the total number of research papers (10%)
 - ii) High-Quality Publications: measured by the number of research papers appearing in top-tier journals (10%)
 - iii) Influence: measured by the number of research papers appearing in highly-influential journals (10%)
 - iv) Citations: measured by the number of highly-cited research papers (10%)

Source:

<https://cwur.org/>



Co-funded by
the European Union



Sumy National
Agrarian University

Global 2000 list by the Center for World University Rankings 2023

Rank	University, Country	Overall Score
1	Harvard University	100.0
2	Massachusetts Institute of Technology (MIT)	96.7
3	Stanford University	95.2
4	University of Cambridge, UK	94.1
5	University of Oxford, UK	93.3
6	Princeton University	92.6
7	University of Chicago	92.1
8	Columbia University	91.6
9	University of Pennsylvania	91.2
10	Yale University	90.8

Rank	University, Country (Poland)	Overall Score
383	Jagiellonian University	75.6
409	University of Warsaw	75.3
602	AGH University of Science and Technology	73.3
670	Henryk Niewodniczański Institute of Nuclear Physics	72.7
723	Warsaw University of Technology	72.3
815	Adam Mickiewicz University	71.6
819	National Centre for Nuclear Research	71.6
870	University of Wrocław	71.2
896	Medical University of Warsaw	71.1
899	Wroclaw Medical University	71.0

Source:

<https://cwur.org/>



Co-funded by
the European Union



Sumy National
Agrarian University

Global 2000 list by the Center for World University Rankings 2023

Rank	University, Country (Ukraine)	Overall Score
1170	Institute of Mathematics of the National Academy of Sciences of Ukraine	69.5
1190	Kharkov Institute of Physics and Technology	69.4
1467	Taras Shevchenko National University of Kyiv	68.0
1779	Institute for Nuclear Research of the National Academy of Sciences of Ukraine	66.8
1802	V.M. Glushkov Institute of Cybernetics of the National Academy of Sciences of Ukraine	66.7
1908	Institute for Scintillation Materials	66.3



Co-funded by
the European Union



Sumy National
Agrarian University

Webometrics

Ranking Web started in 2004 (current is the 20th year of publication) with the aim of offer full coverage of Higher Education Institutons whatever the country or discipline involve. Currently we ranked 31000 HEIs from more than 200 countries

Особливості

- потужність та ефективність сайту університету

Відповідність пріоритетам університету

- розвиток дистанційної освіти

Основні дії для досягнення

- удосконалення сайту
- наявність фахівців та обладнання для запису онлайн курсів

Source:

<https://www.webometrics.info/>



Co-funded by
the European Union



Sumy National
Agrarian University

Webometrics

Current calculation of indicators

Published figures are **RANKS** (lower is better), intended for showing individual performances, but they are not the values used in the calculations. Due to technical issues several key changes (marked in red) have been done, so the following table describes the current methodology:

INDICATORS	MEANING	METHODOLOGY	SOURCE	WEIGHT
PRESENCE	Public knowledge shared	DISCONTINUED		
VISIBILITY	Web contents Impact	Number of external networks (subnets) linking to the institution's webpages (normalized and then the maximum value is chosen)	<i>Ahrefs</i> <i>Majestic</i>	50%
TRANSPARENCY (or OPENNESS)	Top cited researchers	Number of citations from UPDATED Top 310 authors (excluding the top 30 outliers) See Transparent Ranking for additional info	<i>Google Scholar Profiles</i>	10%
EXCELLENCE (or SCHOLAR)	Top cited papers	Number of papers amongst the top 10% most cited in each one of the all 27 disciplines of the full database Data for the five year period: 2017-2021	<i>Scimago</i>	40%

Source:

<https://www.webometrics.info/>



Co-funded by
the European Union



Sumy National
Agrarian University

Webometrics 2023

<u>ranking</u>	<u>University</u>	<u>Det.</u>	<u>Country</u>	<u>Impact Rank*</u>	<u>Openness Rank*</u>	<u>Excellence Rank*</u>
1	Harvard University	29		1	1	1
2	Stanford University	29		3	2	4
3	Massachusetts Institute of Technology	29		1	3	15
4	University of California Berkeley	29		4	4	27
5	University of Oxford	29		15	5	5
6	University of Michigan	29		8	10	8
7	University of Washington	29		6	80	10
7	Cornell University	29		5	15	23
9	Columbia University New York	29		9	7	18
10	Johns Hopkins University	29		16	35	7

Source:

<https://www.webometrics.info/>



Co-funded by
the European Union



Sumy National
Agrarian University

Webometrics 2023

ranking	World Rank	University	Det.	Country	Impact Rank*	Openness Rank*	Excellence Rank*
67	1259	Polytechnic Institute / Національний технічний університет України Київський політехнічний інститут			699	1072	2524
71	1328	National Taras Shevchenko University of Kyiv / Київський національний університет Тараса Шевченка			2102	1551	1501
72	1340	Sumy State University / Сумський державний університет			1424	1189	2024
105	1729	National University of Life and Environmental Sciences of Ukraine (National Agricultural University) / Національний університет біоресурсів і природокористування України			1369	1336	2961
123	1849	National Aviation University (Kyiv International University of Civil Aviation) / Національний авіаційний університет			1480	1543	3059
140	2056	Kharkiv National University of Radio Electronics / Харківський національний університет радіоелектроніки			2693	1604	2846
176	2533	(1) National Technical University Kharkiv Polytechnical Institute / Национальный технический университет Харьковский политехнический институт			4906	1184	3096
181	2650	Ivan Franko National University of Lviv / Львівський національний університет Івана Франка			1035	6553	2999
199	2819	Lviv Polytechnic National University / Національний університет Львівська політехніка			5164	6553	1471
204	2899	Ternopil National Medical University / Тернопільський Національний Медичний Університет			5750	2027	3256

Source:

<https://www.webometrics.info/>



Co-funded by
the European Union



Sumy National
Agrarian University

U-Multirank

Based on the results of a feasibility study covering 150 universities which was carried out in 2010/11, the European Commission decided to fund the implementation of U-Multirank.

The 2022 edition covers 2,202 institutions from 96 countries and a series of 30 subject rankings.

Source:

<https://www.umultirank.org/>

Особливості

- багатовимірний

Відповідність пріоритетам університету

- сприяння розвитку регіону присутності

Основні дії для досягнення

- співпраця з регіональною владою та бізнесом
- міжнародна наукова співпраця



Co-funded by
the European Union



Sumy National
Agrarian University

U-Multirank

U-Multirank is a multidimensional, user-driven approach to international ranking of higher education institutions. It compares the performances of higher education institutions – in short: universities – in the five dimensions of university activity:

- (1) teaching and learning,
- (2) research,
- (3) knowledge transfer,
- (4) international orientation and
- (5) regional engagement.

The U-Multirank web tool enables comparisons at the level of the university as a whole and at the level of specific study programmes. Based on empirical data, U-Multirank compares institutions with similar institutional profiles ('like-with-like') and allows users to develop their own personalised rankings by selecting indicators in terms of their own preferences.

Source:

<https://www.umultirank.org/>



Co-funded by
the European Union



Sumy National
Agrarian University

U-Multirank

General	
Total number of students	Total number of students in the degree programme.
Students in their 1st year	Number of first-year students in the degree programme.
International students	Number of international students in the degree programme.
Total number of students in field (major)	Total number of students taking the subject at the department, excluding minor subject students.
Percentage of female students	Percentage of female students enrolled at the department.
Academic staff (fte)	Number of full-time equivalent academic staff at the institution.
Period of study	The normative period of study for the degree programme (years).
Tuition fees for national students	Tuition fees national students are being charged.
Tuition fees for international students	Tuition fees international students are being charged.
Female academic staff	The number of female academic staff as a percentage of total number of academic staff.
Social Inclusion	The percentages among all new bachelor entrants of selected groups of traditionally underrepresented groups: mature students, students with disabilities as well as bachelor and master students with non-academic family background (first generation students).
Social Inclusion	The percentages among all new bachelor entrants of selected groups of traditionally underrepresented groups: mature students, students with disabilities as well as bachelor and master students with non-academic family background (first generation students).

Regional Engagement	
Student internships in the region	Out of the students who did an internship, the percentage for which the internship was with a company or organisation located in the region.
Regional joint publications	The percentage of the department's research publications that list at least one co-author with an affiliate address in the same spatial region (within a distance of 50 km from the university).
Income from regional sources	The proportion of external research revenues – apart from government or local authority core/recurrent grants – that comes from regional sources (i.e. industry, private organisations, charities).
BA graduates working in region	The percentage of bachelor graduates who found their first job (after graduation) in the region where the university is located.
Student internships in region	The percentage of all the university's students doing an internship whose internship was with a company or organisation located in the same region as the university.
Regional joint publications	The percentage of the university's research publications that list at least one co-author with an affiliate address located in the same spatial region (within a distance of 50 km).
Income from regional sources	The proportion of external research revenues – apart from government or local authority core/recurrent grants – that comes from regional sources (i.e. industry, private organisations, charities).
MA graduates working in region	The percentage of masters graduates who found their first job (after graduation) in the region where the university is located.
Graduates employment in the region	Percentage of graduates working in the region 18 months after graduation.
Regional Publications with Industrial Partners	The proportion of publications with industrial partners that was published with co-authors from the same region (within a distance of 50 km from the university).

Source:

<https://www.umultirank.org/>



Co-funded by
the European Union



Sumy National
Agrarian University

UI Green Metric World University Ranking

Особливості

- вплив на сталий розвиток

Відповідність пріоритетам університету

- сприяння досягненню Цілей сталого розвитку ООН

Основні дії для досягнення

- розробка та реалізація програм екологічного кампусу
- освітні курси та наукові дослідження з тематики сталого розвитку

Source:

<https://greenmetric.ui.ac.id/>



Co-funded by
the European Union



Sumy National
Agrarian University

3. The Times Higher Education Impact Rankings



Co-funded by
the European Union



Sumy National
Agrarian University

Impact Rankings 2022: methodology

Definitions of areas

EXPLORE IMPACT RANKINGS FOR INDIVIDUAL SDGS



Research: the most obvious, and traditional way that a university might help to deliver the SDGs is by creating research in relevant topics.

Stewardship: universities are custodians of significant resources; not just physical resources, but also their employees, faculty, and students. How they act as stewards is one of the key factors in delivering the SDGs.

Outreach: place is critical in higher education, and the work that universities do with their local, regional, national and international communities is another key way that they can have an impact on sustainability.

Teaching: teaching plays a critical role, both in ensuring that there are enough skilled practitioners to deliver on the SDGs, and in making sure that all alumni take forward the key lessons of sustainability into their future careers.



Co-funded by
the European Union



Sumy National
Agrarian University



Source:

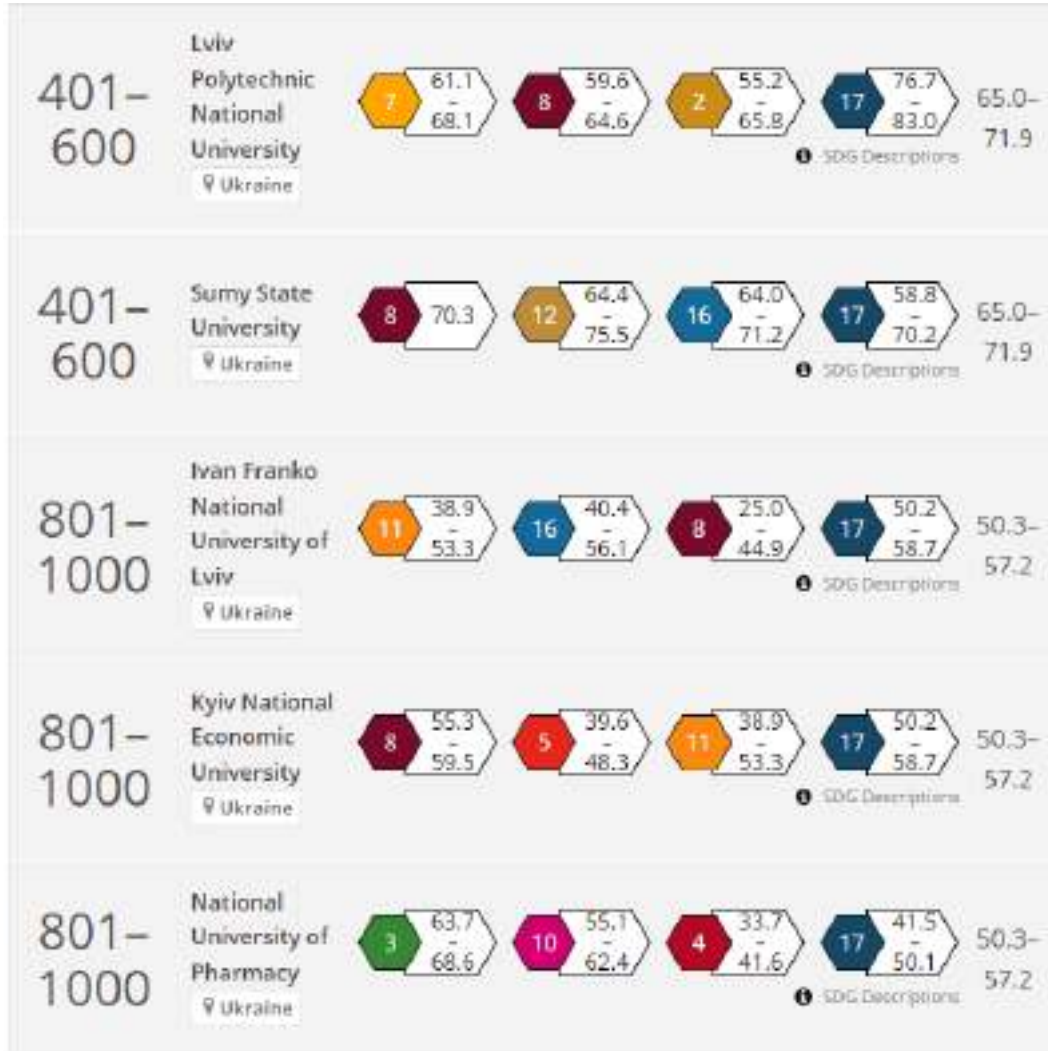
<https://www.timeshighereducation.com/impactrankings>



Co-funded by
the European Union



Sumy National
Agrarian University



Рейтинг 2019 був першим виданням та охоплював понад 450 ЗВО із 76 країн, зокрема 5 із України,

рейтинг 2022: 1,406 ЗВО із 106 країн, зокрема 26 із України.



Co-funded by
the European Union



Sumy National
Agrarian University



Sustainability and Resilience 2030



The University has also been ranked in the top ten Universities in the world against the following Sustainable Development Goals (SDGs) recognising our sector leading social and ecological sustainability focus:

- 1st in world for SDG6: Clean Water and Sanitation
- 2nd in world for SDG12: Responsible Consumption and Production
- 3rd in world for SDG5: Gender Equality
- 4th in World for SDG10: Reduced Inequalities
- 5th in world for SDG17: Partnership for the Goals
- 9th in world for SDG14: Life below Water
- 10th in world for SDG15: Life on Land



Co-funded by
the European Union



Sumy National
Agrarian University



Sustainability and Resilience 2030



Western has instituted a distributed governance framework for coordinating and monitoring the implementation of sustainability strategic and priority actions. This framework is known as CORE: Curriculum, Operations, Research and Engagement. From these strategic actions, four key priority actions emerge:

- Curriculum: Deliver 21C Curriculum Challenges and work to embed and identify SDG capacity in our curriculum.
- Operations: Achieve carbon neutrality by 2030.
- Research: Demonstrate SDG impact of our research profile and consolidate Western's position in the Times Higher Education Impact Rankings.
- Engagement: Develop an SDG 2030 schools' strategy for the leaders of tomorrow leveraging our CORE expertise to develop pathways to study sustainability at Western and work meaningfully with community partners.



Co-funded by
the European Union



Sumy National
Agrarian University



Sustainability and Resilience 2030

Engage and contribute on the new digital platform!

CONTACT SUSTAINABILITY EDUCATION



Home Our Decadal Strategy Themes Engage & Contribute

SUSTAINABILITY AND RESILIENCE 2030

OUR DECADAL STRATEGY

Our Decadal Strategy, Sustainability and Resilience 2030, details the reasons why, as a leading anchor educational institution deeply embedded in Greater Western Sydney, we must envision a more resilient, sustainable and prosperous future.

Explore our priority statements below, learn more about how we seek to tackle the challenges of the 21st century and engage with us to share the contributions and efforts you're making in support of this strategy.

LEARN ABOUT THE STRATEGY →

SUBMIT YOUR WORK

CHALLENGES AND OPPORTUNITIES →

BUILDING COLLECTIVE LOCAL ENGAGEMENT →



<https://www.westernsydney.edu.au/sustainable-development/decadal-strategy>

The collage features several posters and reports:

- Rare Upland Swamps:** A poster about the RARE UPLAND SWAMPS project.
- Unlocking Impact:** A report titled 'UNLOCKING IMPACT' with the subtitle '2021 Sustainability Report'.
- Future Makers:** A poster titled 'FUTURE MAKERS' with the subtitle 'THE PROBLEM OF PLASTIC'.
- Academic Skills Pocketbook:** A poster titled 'Academic Skills Pocketbook'.
- Carbon Neutral Organisation:** A logo for the Climate Active Carbon Neutral Organisation.
- Casper Study:** A poster for the CASPER STUDY.
- Indigenous Values:** A poster about 'The Indigenous Values to Inform our Library Guide'.
- Green Energy:** A poster about 'Supporting Gender Equity through community health workers'.
- Gender Equity:** A poster about 'Transition to the other school for young people with intellectual disability'.
- Gender Equity:** A poster about 'The Experience of Gender Inequality under the Juvenile Justice System or Subsequent'.
- Gender Equity:** A poster about 'Procurement Plan for Indigenous Goods and Services'.
- Gender Equity:** A poster about 'Procurement Plan for Indigenous Goods and Services'.
- Gender Equity:** A poster about 'Future Makers - Gender Equity'.



Co-funded by
the European Union



Sumy National
Agrarian University



Aligning our Priority Statements for Local Action towards the SDG 2030 Targets

Whilst our thinking in developing the Nine Interconnected Priority Statements is wider than the SDGs, we have aligned them to the United Nations SPs framework: People, Planet, Prosperity, Peace and Partnerships to show where there is linkage:

PLANET

We are determined to protect the planet from degradation, including through sustainable consumption and production, sustainably managing its natural resources and taking urgent action on climate change, so that it can support the needs of the present and future generations.

EXPLORE THEM

PEOPLE

We are determined to end poverty and hunger, in all their forms and dimensions, and to ensure that all human beings can fulfil their potential in dignity and equality and in a healthy environment.

EXPLORE THEM

PROSPERITY

We are determined to ensure that all human beings can enjoy prosperous and fulfilling lives and that economic, social and technological progress occurs in harmony with nature.

EXPLORE THEM

PEACE

We are determined to foster peaceful, just and inclusive societies which are free from fear and violence. There can be no sustainable development without peace and no peace without sustainable development.

EXPLORE THEM

PARTNERSHIPS

We are determined to mobilise the means required to implement this agenda through a revitalised Global Partnership for Sustainable Development, based on a spirit of strengthened global solidarity, focused in particular on the needs of the poorest and most vulnerable and with the participation of all countries, all stakeholders and all people.

EXPLORE THEM



Co-funded by
the European Union



Sumy National
Agrarian University



THE SDGS IN NUMBERS OUR PROGRESS

Western Sydney is the first to highlight its role in the 'THE UNIVERSITY IMPACT FOOTPRINT' for our 2020 Impact Report.

BEYOND A BALANCE:

1st in the global Times Higher Education (THE) Corporate Social Responsibility for work and progress on the SDGs.

2,197 students graduated from our campuses in 2020, ensuring and increasing the health and well-being of all levels of study.

8,674 staff members across all campuses contributed to a variety of initiatives and programs that support our students and staff.

46% of our senior students staff positions have achieved our best qualified graduate program outcomes.

252 programs are now in operation across all campuses, ensuring our students have access to a wide range of programs and services.

7,061 students on 5-year terms in 2021 have first degree and/or continuing education in a variety of disciplines, ensuring our students have access to a wide range of programs and services.

91% of our 2020 results exceeded or surpassed our targets, with only 9% of our 2020 results falling short.

100% of our 2020 results exceeded or surpassed our targets, with only 9% of our 2020 results falling short.

26 research centers in our 100+ research centers across our campuses, ensuring our students have access to a wide range of programs and services.

SDG 5 Gender equality: Increase women's participation in decision-making and leadership roles across all levels of the organization.

SDG 8 Decent work and economic growth: Increase the number of staff members who are employed full-time.

SDG 9 Industry, innovation and infrastructure: Increase the number of staff members who are employed full-time.

SDG 10 Reduced inequalities: Increase the number of staff members who are employed full-time.

SDG 11 Sustainable cities and communities: Increase the number of staff members who are employed full-time.

SDG 12 Responsible consumption and production: Increase the number of staff members who are employed full-time.

SDG 13 Climate action: Increase the number of staff members who are employed full-time.

SDG 14 Life below water: Increase the number of staff members who are employed full-time.

SDG 15 Life on land: Increase the number of staff members who are employed full-time.

UNIVERSITY

UNIVERSITY

OUR ACHIEVEMENTS

2021 AT A GLANCE:

PLANET

10 new Sustainable Energy contracts launched by our campuses in 2021.

LINKING OUR DECADEAL STRATEGY

Our Sustainability and Resilience 2020 Strategy is embedded in the plan by linking our Decadal and Cross-Decadal strategies, knowledge and engagement systems.



PROSPERITY

\$800k to support the future of our campuses in 2021.

LINKING OUR DECADEAL STRATEGY

Our Sustainability and Resilience 2020 Strategy is embedded in the plan by linking our Decadal and Cross-Decadal strategies, knowledge and engagement systems.



PEOPLE

100% commitment to our campuses being carbon neutral by 2025, not making our commitment.

LINKING OUR DECADEAL STRATEGY

Our Sustainability and Resilience 2020 Strategy is embedded in the plan by linking our Decadal and Cross-Decadal strategies, knowledge and engagement systems.



PEACE

17 years of being recognized as an Employer of Choice for Gender Equality.

LINKING OUR DECADEAL STRATEGY

Our Sustainability and Resilience 2020 Strategy is embedded in the plan by linking our Decadal and Cross-Decadal strategies, knowledge and engagement systems.



PARTNERSHIPS

18 industry partners in our campuses, ensuring our students have access to a wide range of programs and services.

LINKING OUR DECADEAL STRATEGY

Our Sustainability and Resilience 2020 Strategy is embedded in the plan by linking our Decadal and Cross-Decadal strategies, knowledge and engagement systems.



CROSS-CUTTING THEMES

At least 1% of our budget is used by education to ensure that all members of our campuses have access to a wide range of programs and services.

REIMAGINING CAMPUS OPERATIONS ENVIRONMENTAL SUSTAINABILITY

Operational efficiencies of business continuity and support for the emerging learning and teaching approaches, have reinforced the current and ongoing work for resilience planning to the impacts of climate change we are already facing.

REDUCING OUR ENVIRONMENTAL FOOTPRINT

Our 2020 Strategy is embedded in the plan by linking our Decadal and Cross-Decadal strategies, knowledge and engagement systems.

WATER CYCLE MANAGEMENT

Our 2020 Strategy is embedded in the plan by linking our Decadal and Cross-Decadal strategies, knowledge and engagement systems.

PROSPERITY SYNERGIC CREDIT AND OFFERS

Our 2020 Strategy is embedded in the plan by linking our Decadal and Cross-Decadal strategies, knowledge and engagement systems.

SOLAR ON-CAMPUS

Our 2020 Strategy is embedded in the plan by linking our Decadal and Cross-Decadal strategies, knowledge and engagement systems.

WASTE AND RECYCLING

Our 2020 Strategy is embedded in the plan by linking our Decadal and Cross-Decadal strategies, knowledge and engagement systems.

17 YEARS

Our 2020 Strategy is embedded in the plan by linking our Decadal and Cross-Decadal strategies, knowledge and engagement systems.

OUR CLIMATE TARGETS

- 2021 100% RENEWABLES IN ELECTRICITY SUPPLY CONTRACT (ACHIEVED)
- 2023 CARBON NEUTRAL ACCREDITATION FROM CLIMATE ACTIVE
- 2029 CLIMATE POSITIVE BY 2029 (AND PILOT ON HAWKESBURY BY 2025)





Co-funded by
the European Union



Sumy National
Agrarian University

4. The UI GreenMetric World University Ranking



Co-funded by
the European Union



Sumy National
Agrarian University

UI GreenMetric World University Ranking



SETTINGS AND INFRASTRUCTURE (SI)
(15%)

Basic information of the university policy towards green environment. Include space for greenery and in safeguarding environment, as well as developing sustainable energy.

ENERGY AND CLIMATE CHANGE (EC)
(21%)

The university's attention to the use of energy and climate change issues. Universities are expected to increase the effort in energy efficiency on their buildings, nature and resources.

WASTE (WS)
(18%)

Waste treatment and recycling programs are major factors in creating a sustainable environment. Universities must take note on its waste production as well as recycling efforts.

WATER (WR)
(10%)

Universities are expected to decrease water usage, increase conservation program, and protect the habitat. This may include water conservation program and piped water usage.

TRANSPORTATION (TR)
(18%)

Universities policies in limiting the number of motor vehicles in campus, the use of campus bus and bicycle to encourage a healthier environment and reduce universities carbon footprint.

EDUCATION AND RESEARCH (ED)
(18%)

University effort in creating and supporting the new generation concern with sustainability issues.

The Rankings have seen a dramatic increase of participants from 95 universities in 35 countries in 2010 to 1050 universities in 85 countries in 2022.



Co-funded by the European Union



Sumy National Agrarian University



GUIDELINE

UI GreenMetric World University Rankings 2023

"Innovation, Impacts and Future Direction of Sustainable Universities"



<http://greenmetric.ui.ac.id/>



TIMELINE

UI GreenMetric World University Rankings 2023

"Innovations, Impacts, and Future Direction of Sustainable Universities"



Data Submission: 15 May - 31 October

Data Validation: November

Results Announcement: December

Register online at <https://greenmetric.ui.ac.id/register>



Co-funded by
the European Union



Sumy National
Agrarian University

Overall Rankings 2022

Rank 2022 ↑↓	University ↑↓	Country ↑↓	Total Score ↑↓	Setting & Infrastructure ↑↓	Energy & Climate Change ↑↓	Waste ↑↓	Water ↑↓	Transportation ↑↓	Education & Research ↑↓
1	Wageningen University & Research	Netherlands	9300	1325	1825	1800	1000	1600	1750
2	Nottingham Trent University	United Kingdom	9175	1300	1975	1800	850	1500	1750
3	University of Nottingham	United Kingdom	9175	1375	1700	1800	1000	1650	1650
4	University of Groningen	Netherlands	9160	1325	1635	1800	1000	1750	1650
5	University of California, Davis	USA	9150	1375	1775	1800	1000	1450	1750
6	Umwelt-Campus Birkenfeld (Trier University of Applied Sciences)	Germany	9125	1175	1975	1575	950	1700	1750
7	University College Cork	Ireland	9075	1250	1800	1725	1000	1600	1700
8	University of Connecticut	USA	9075	1400	1550	1725	1000	1650	1750
9	Universität Bremen	Germany	9050	1300	1775	1650	900	1700	1725
10	Universidade de Sao Paulo USP	Brazil	9050	1400	1600	1725	950	1700	1675



Co-funded by
the European Union



Sumy National
Agrarian University

Ranking by Country 2022 - Ukraine

Ranking ↑↓	University ↑↓	Country ↑↓	Total Score ↑↓	Setting and Infrastructure ↑↓	Energy and Climate Change ↑↓	Waste ↑↓	Water ↑↓	Transportation ↑↓	Education ↑↓
1	Ukrainian National Forestry University	Ukraine	7485	1100	1200	1350	560	1550	1725
2	The National University of Ostroh Academy	Ukraine	7045	1100	1185	1575	360	1650	1175
3	Sumy State University	Ukraine	6810	1000	1310	1050	700	1375	1375
4	Lviv Polytechnic National University	Ukraine	6525	775	1300	1050	350	1450	1600
5	Uman National University of Horticulture	Ukraine	5445	700	1250	975	510	975	1035
6	West Ukrainian National University	Ukraine	4845	550	935	675	360	1075	1250
7	Sumy National Agrarian University	Ukraine	4545	1025	835	525	210	850	1100
8	Kyiv National University of Technologies and Design	Ukraine	4485	840	710	600	250	785	1300
9	Uzhhorod National University	Ukraine	4180	770	975	525	210	610	1090
10	National University "Yuri Kondratyuk Poltava polytechnic"	Ukraine	4095	640	845	450	400	885	875

Showing 1 to 10 of 17 entries



Co-funded by
the European Union



Sumy National
Agrarian University



Most sustainable
university in the
world



Best university in The
Netherlands



#50 Best university
in the world



7 Gold medals EIU
best university

- ✓ Sustainability is in our DNA. It plays a key role in everything we say and do, and is rooted not only in our research and education, but even in the way WUR is governed.
- ✓ Corporate social responsibility is an important pillar for Wageningen University & Research.

Sustainability in our themes

Sustainability is a common denominator in the central themes of our research and education: Biodiversity, Climate change, Circular & Biobased Economy, From hunger to food security, and Nutrition & Health. The sixth theme, Artificial Intelligence, is a common thread that runs through all these themes.



Circular & Biobased
Economy



Feeding the world



Nutrition & Health



Artificial Intelligence



Biodiversity



Climate change

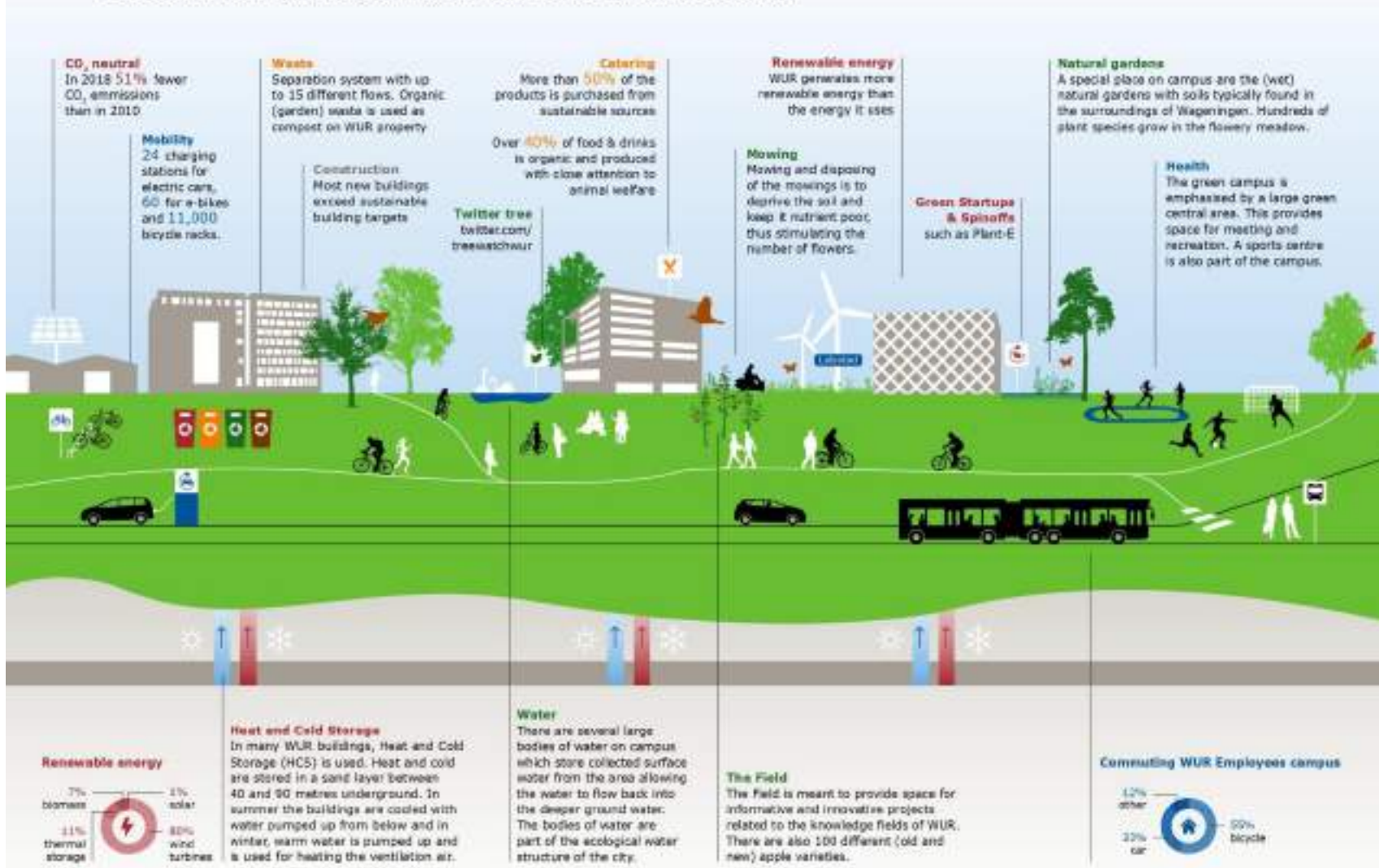


Co-funded by
the European Union



Sumy National
Agrarian University

Sustainability Wageningen University & Research



Sustainable campus
Wageningen Campus inspires innovators to work on a sustainable future by providing a highly sustainable work-environment, which is already 80% climate neutral.

<https://subsites.wur.nl/en/campus/campus/sustainable-campus.htm>



Co-funded by
the European Union



Sumy National
Agrarian University

5. QS Sustainability Rankings



Co-funded by
the European Union



Sumy National
Agrarian University

QS World University Rankings: Sustainability 2023

Environmental impact

The environmental impact rankings reflect the outward impact a university is making when it comes to building a sustainable institution, engaging in relevant and impactful research and embedding sustainability in the curriculum.

The **sustainable institutions** indicator considers whether a university holds membership in officially-recognised climate action or sustainability groups, has a publicly available sustainability strategy and energy emissions report, has student societies focused on environmental sustainability, and a published commitment to becoming **NetZero**.

The **sustainable education** indicator looks at alumni outcomes and academic reputation within earth, marine and environmental sciences courses, and the availability of courses that embed climate science and/or sustainability within the curriculum. If a university has a research centre dedicated to environmental sustainability, further points are gained.

The **sustainable research** indicator assesses the university's research activity around the **United Nation's Sustainable Development Goals** and whether the government is funding research and development in this area.

Social impact

The **equality** indicator assesses institutions on a variety of measures including the proportion of female students and faculty, the availability of public equality, diversity and inclusion policy, and the disability support available.

The **knowledge exchange** indicator measures universities on their commitment to knowledge transfer in collaboration with less-economically-supported institutions, and a university's inclination to partner with other institutions and organisations.

Impact of education looks at the university's research into quality education, alumni impact and academic reputation in relevant social subjects, and how free students and academics are in pursuing their research without censorship.

The **employability and opportunities** indicator gives each university an employer reputation score and an employment outcomes score, based on how prepared students are for successful careers. Universities are also assessed on research into work and economic growth, and peace, justice and strong institutions, as well as the rate of unemployment within the country they're based in.

Quality of life is the final social impact indicator, used to understand an institution's commitment to wellbeing within and outside of the university. We also look at research activity into quality of life, health options on campus and air quality in the region, for example.













Co-funded by
the European Union



Sumy National
Agrarian University

QS World University Rankings: Sustainability 2023

Overall Rank	University	Environmental Impact Rank	Social Impact Rank
1	 University of California, Berkeley (UCB) Berkeley, United States	1	1
2	 University of Toronto Toronto, Canada	3	7
3	 University of British Columbia Vancouver, Canada	4	2
4	 The University of Edinburgh Edinburgh, United Kingdom	10	3
~5	 The University of New South Wales (UNSW) Sydney) Sydney, Australia	8	~11

~5	 The University of Sydney Sydney, Australia	11	5
7	 The University of Tokyo Tokyo, Japan	2	~97
8	 University of Pennsylvania Philadelphia, United States	15	18
9	 Yale University New Haven, United States	6	~11
10	 The University of Auckland Auckland, New Zealand	5	~43



Co-funded by
the European Union



Sumy National
Agrarian University



University of
California,
Berkeley



Public Service Center
Public service and leadership opportunities for students, faculty and staff.



Kindergarten to college
Portal to 200-plus outreach programs linking UC Berkeley undergrads and grad students with local K-12 students.



Student leadership programs
Leadership resources and coaching for Berkeley students.

Natural history museums
Supporting teaching and research in natural history with a variety of artifacts and collections.

Science@Cal
Bringing together scientists and educators for public lectures and activities.



Lawrence Hall of Science
Hands-on science exhibits, camps and school programs for kids, parents and educators.



Co-funded by
the European Union



Sumy National
Agrarian University

**Інституційне лідерство соціально відповідальних
університетів в контексті міжнародних рейтингів**

- 1. Взаємозв'язок соціальної відповідальності університетів та етичного лідерства**
- 2. Порівняння основних міжнародних рейтингів університетів**
- 3. The Times Higher Education Impact Rankings**
- 4. The UI GreenMetric World University Ranking**
- 5. QS Sustainability Rankings**